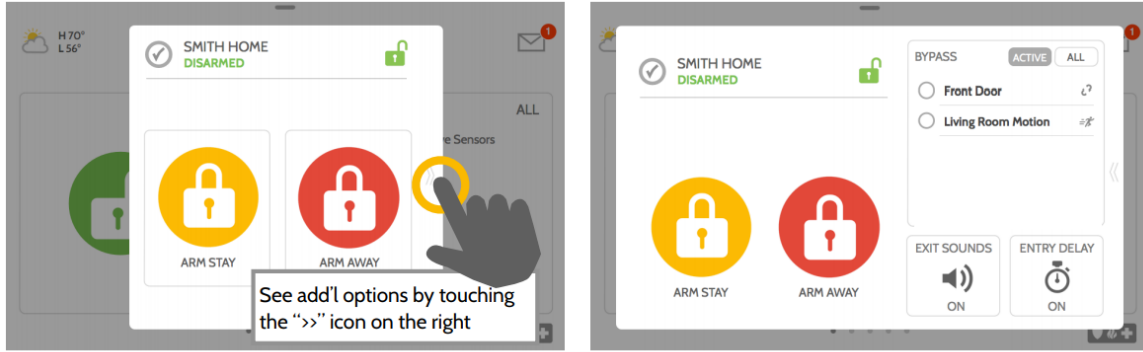


# QOLSYS Alarm Quick User Guide



## Arming Options

Quickly choose from "stay" or "away"



### Arming Stay

Arms doors and windows only



### Arming Away

Arms doors, windows and motions



### Additional Options

View additional arming options by touching the ">>" icon on the right side.

## Additional Arming Options

Select these options before choosing your arming type



### Bypass

Touch the circle next to a sensor to bypass it during the arming sequence



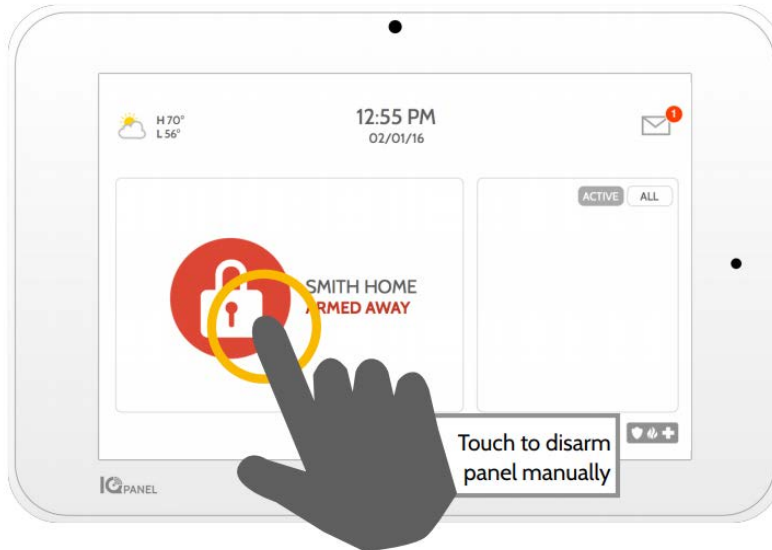
### Exit Sounds

The panel beeps as the timer counts down. Silence these beeps before you choose the arming type.



### Entry Delay

The panel will give you time to disarm once a "delay door" has been opened. Turn this off with a touch.



## Disarming your System

When your system is armed, there are multiple ways to disarm:

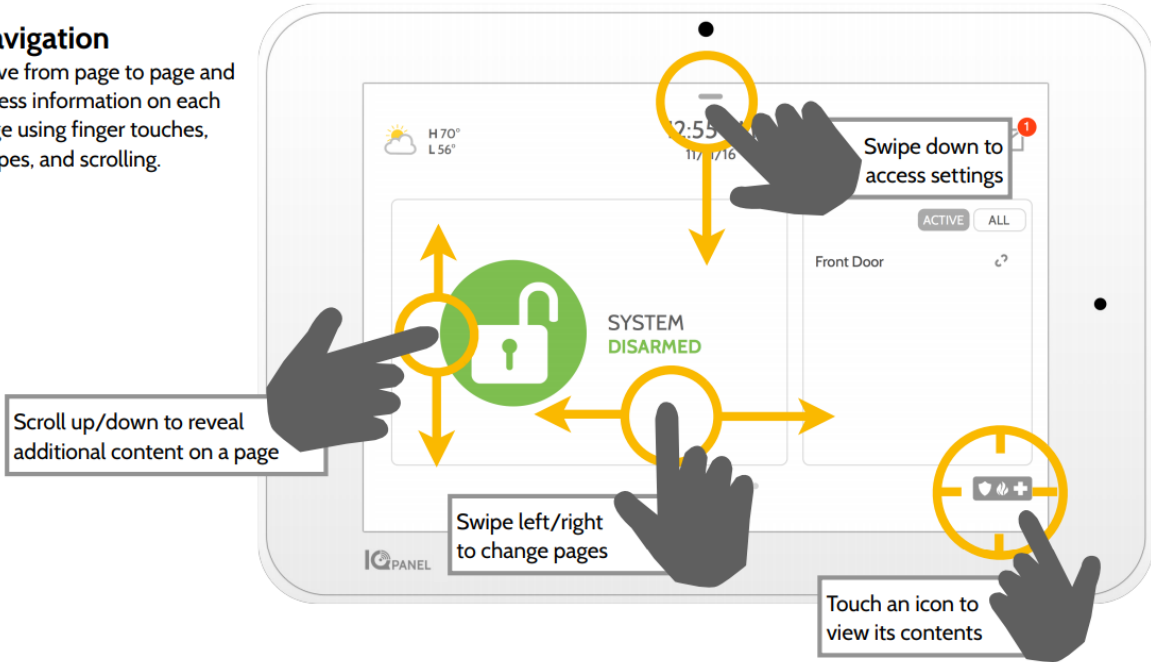


### Disarming Manually

To manually disarm your panel, touch the icon in the center of the screen. You will be prompted to enter a valid code. Failure to enter a valid code with the time required will trigger the alarm.

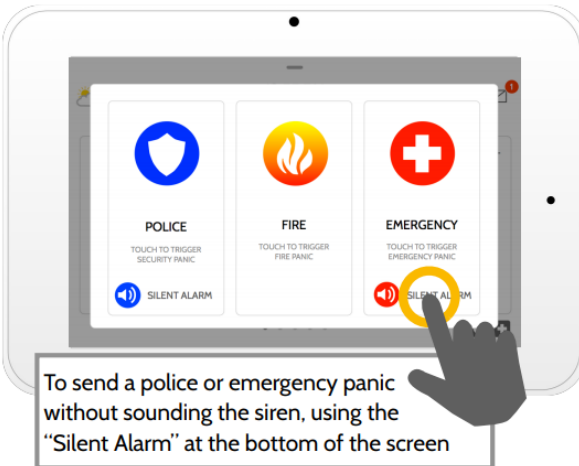
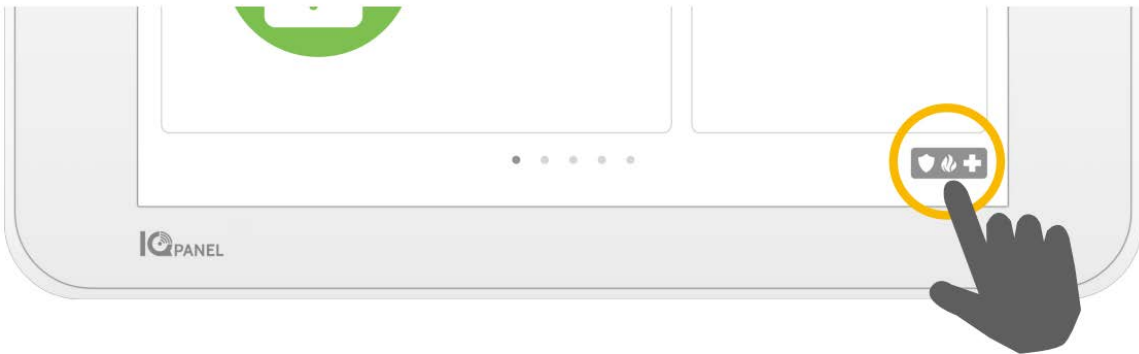
## Navigation

Move from page to page and access information on each page using finger touches, swipes, and scrolling.



## Emergency Panic

If you have a police, fire, or medical emergency and your system is not armed or a sensor has not been triggered, you can send a manual emergency panic by touching the icon in the bottom right corner and selecting the type of emergency you are experiencing. (Note: based on your location, not all options may appear or be available to you.)



## Alarm Types



**Police:** When touched it triggers the "Police" siren pattern and sends a police emergency signal to your provider's monitoring station.



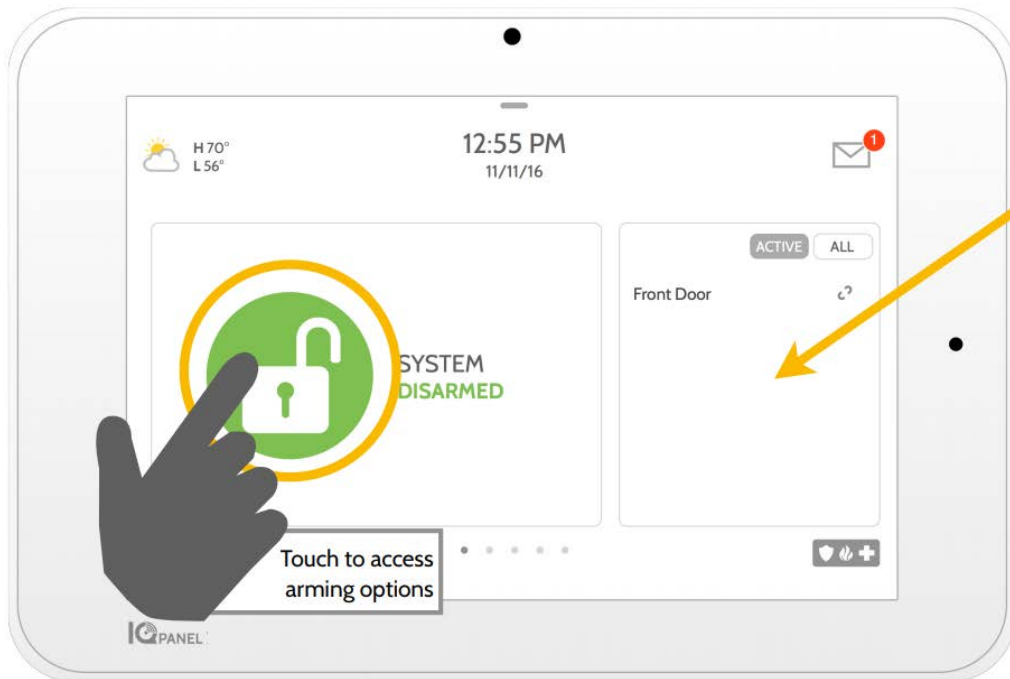
**Fire:** When touched it triggers the "Fire" siren pattern and sends a fire emergency signal to your provider's monitoring station.



**Emergency:** When touched it triggers the "Emergency" siren pattern and sends an emergency signal to your provider's monitoring station.




**Canceling an Emergency Panic**  
To cancel an emergency panic, touch the "cancel" button and enter a valid user code.



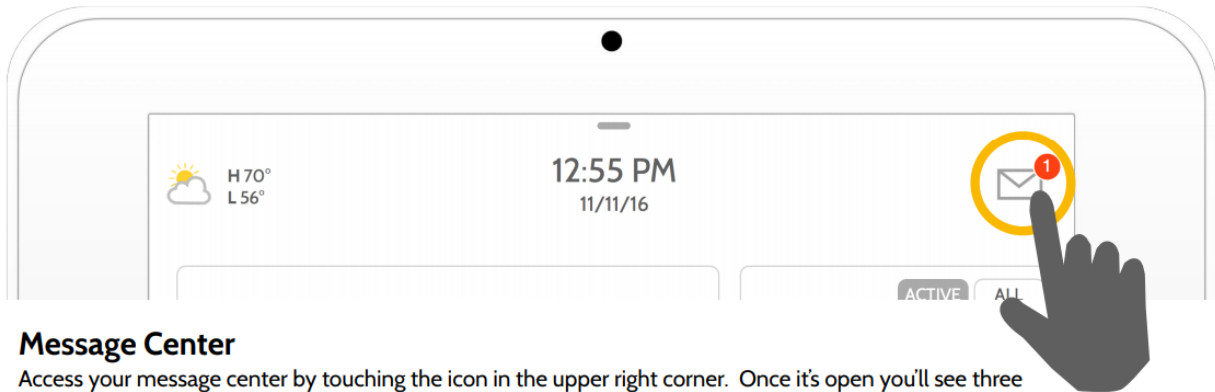
### Sensor List

Open or active sensors appear in a scrollable list on the right. Touch the icons in the upper right corner to switch your view to either "Active" or "All" sensors.

### Sensor status:

-  Open
-  Closed
-  Active
-  Idle
-  Unreachable
-  Tampered

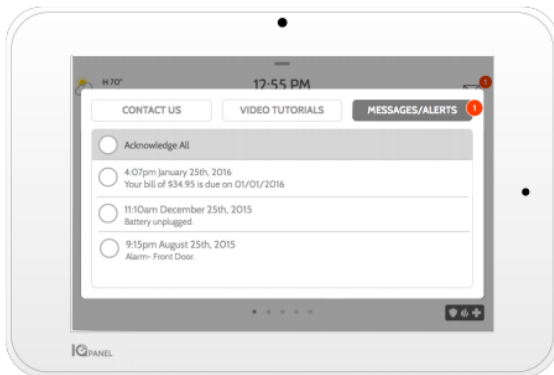
Touch to access arming options



### Message Center

Access your message center by touching the icon in the upper right corner. Once it's open you'll see three sections: Contact, Video Tutorials, and Messages/Alerts/Alarms

*(Note: This icon may appear different than shown, depending on your provider's settings)*



### Messages/Alerts/Alarms

Get messages from your system like low battery alerts, alarms, and power failures. Messages from your provider will also appear here.

To dismiss, touch the circle to the left of the message and touch "OK" to remove it from your message center.

You can also remove all messages at once by touching "Acknowledge All"